



**This large chestnut tree, that spans from one side of the River Mole to the other, has lain like this for many years.**

**Unightly debris gathers around the trunk to be dispelled as the level of the water rises.**





**Access to work on the tree was restricted. Heavy lifting equipment was needed.**

**To manoeuvre the telehandler a dead fruit tree covered in ivy has to be removed to provide space for the telehandler to be positioned on the river bank.**





**A risk assessment is carried out. Health and safety of our operatives is paramount. In addition to the protective clothing including helmets and earphones, which is mandatory for any job, waders and buoyancy jackets are worn.**

**[www.connicktrecare.co.uk](http://www.connicktrecare.co.uk) 0800 975 4535**







**Safety ropes are used to secure Lee Chester, a qualified tree surgeon with 15 years' experience, to a tree on the opposite bank.**





**Safety ropes are used to secure Lee Chester, a qualified tree surgeon with 15 years' experience, to a tree on the opposite bank and the fallen chestnut tree.**





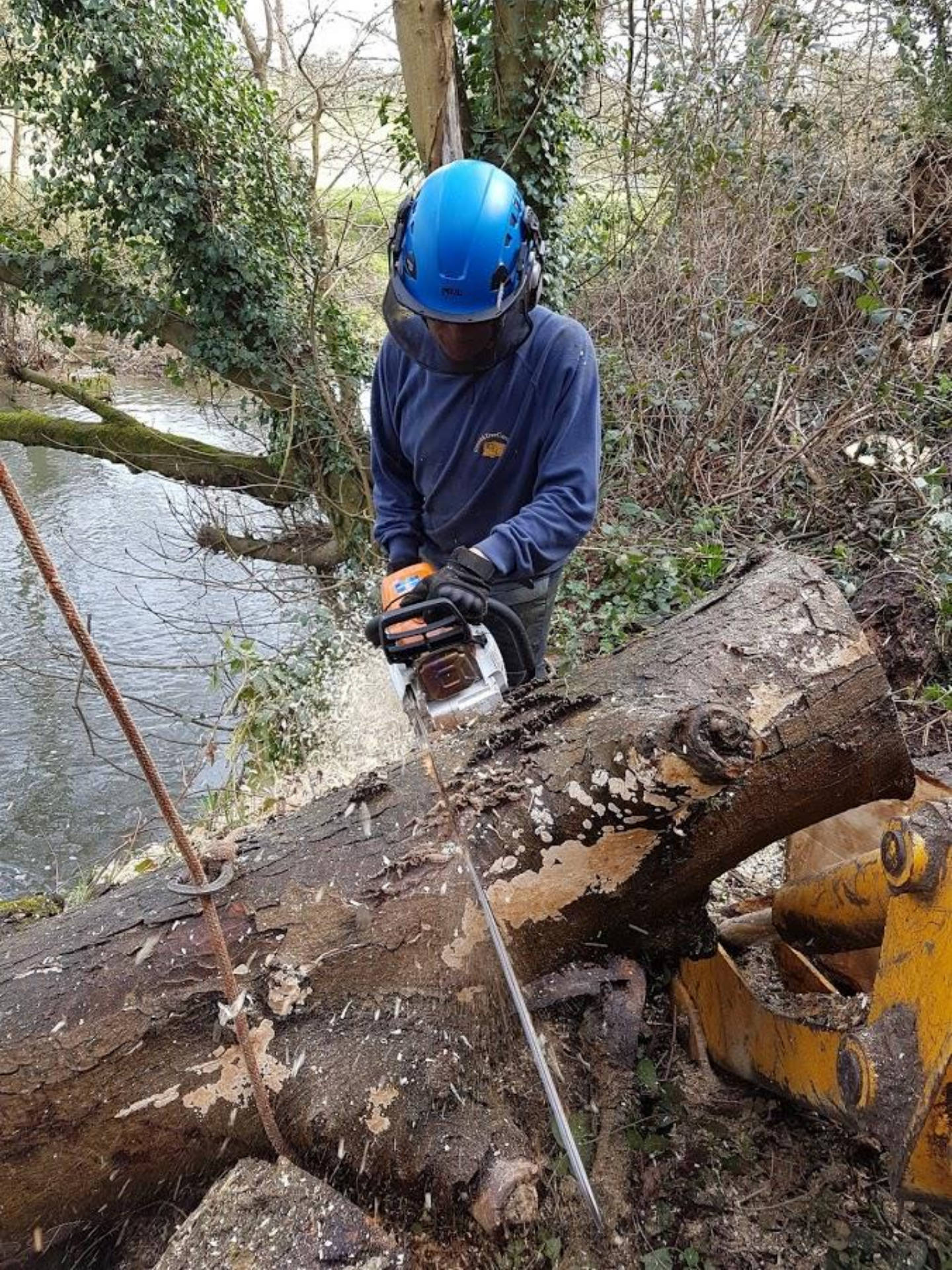
**As Lee cuts the chestnut in stages, ropes are attached so that the sections so they can be slowly lifted and placed on the the river bank.**





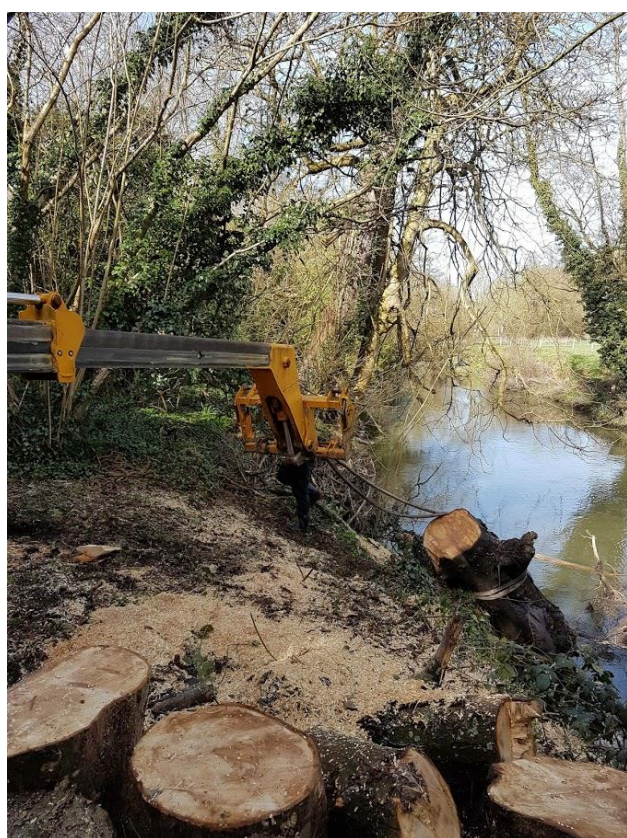
**Ropes and cables are attached so that Neil Gosling controlling the telehandler can slowly lift and pull each part of the trunk back to the river bank.**





**It's not often that Connick Tree Care's Managing Director, Mike Connick, gets a chance to get behind the chainsaw. He wasn't going to pass up on this opportunity!**





**The operation to remove the fallen chestnut tree from the River Mole took 5 hours.**

**The site was left clean and tidy and the river flows freely for the first time in many years.**

**[www.connicktrecare.co.uk](http://www.connicktrecare.co.uk) 0800 975 4535**

